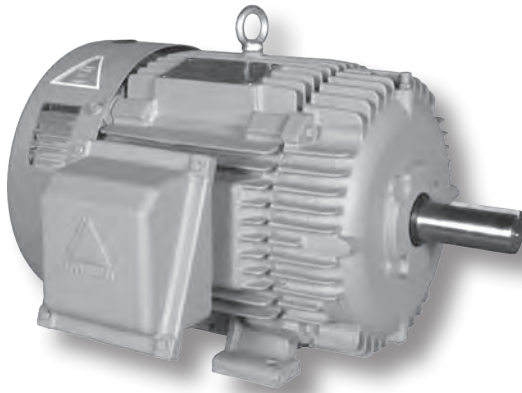


HYUNDAI CROWN TRITON™ SERIES MOTORS

PREMIUM EFFICIENCY

TEFC Enclosure ▪ Rigid Base

Three-Phase ▪ 208-230/460 and 460 Volt



Product Overview

- 1-250 HP
- 3600, 1800 and 1200 RPM
- 208-230/460 volt (1-125 HP)
- 460 volt (150-250 HP)
- TEFC enclosure
- Dual rated service factor 1.15 for 40°C / 1.0 for 65°C
- Class F insulation
- Rigid base
- Premium Efficiency, meets or exceeds EISA 2007 requirements defined in NEMA MG-1 table 12-12
- 5 year warranty
- NEMA Design B
- Cast iron frame and conduit box
- Suitable for part winding start on low voltage (1-125 HP)
- Suitable for wye-delta start (15-250 HP)
- Inverter ready, 10:1 CT / 20:1 VT
- Double drilled feet to accommodate mounting flexibility (324T-449T)
- F2 field mountable
- Class I, Division 2, Groups A, B, C, D
- CC # 038A



CC038A



HP	RPM	Voltage	Frame	Model Number	FL Amps (A)	FL Eff. (%)	Approx. Wt. (lbs.)	Notes
1	1800	208-230/460	143T	HHI1-18-143T	1.6	85.5	53	
	1200	208-230/460	145T	HHI1-12-145T	1.8	82.5	55	
	3600	208-230/460	143T	HHI1.5-36-143T	2.0	84.0	53	
1.5	1800	208-230/460	145T	HHI1.5-18-145T	2.2	86.5	55	
	1200	208-230/460	182T	HHI1.5-12-182T	2.3	87.5	90	
	3600	208-230/460	145T	HHI2-36-145T	2.6	85.5	55	
2	1800	208-230/460	145T	HHI2-18-145T	3.0	86.5	55	
	1200	208-230/460	184T	HHI2-12-184T	3.0	88.5	105	
	3600	208-230/460	182T	HHI3-36-182T	3.8	86.5	90	
3	1800	208-230/460	182T	HHI3-18-182T	3.9	89.5	90	
	1200	208-230/460	213T	HHI3-12-213T	4.5	89.5	150	
	3600	208-230/460	184T	HHI5-36-184T	6.1	88.5	105	
5	1800	208-230/460	184T	HHI5-18-184T	6.5	89.5	105	
	1200	208-230/460	215T	HHI5-12-215T	7.4	89.5	165	
	3600	208-230/460	213T	HHI7.5-36-213T	9.0	89.5	150	
7.5	1800	208-230/460	213T	HHI7.5-18-213T	9.5	91.7	150	
	1200	208-230/460	254T	HHI7.5-12-254T	10.3	91.0	260	
	3600	208-230/460	215T	HHI10-36-215T	12.0	90.2	165	
10	1800	208-230/460	215T	HHI10-18-215T	12.8	91.7	165	
	1200	208-230/460	256T	HHI10-12-256T	13.8	91.0	300	
	3600	208-230/460	254T	HHI15-36-254T	16.9	91.7	260	
15	1800	208-230/460	254T	HHI15-18-254T	18.3	92.4	260	
	1200	208-230/460	284T	HHI15-12-284T	19.8	91.7	380	
	3600	208-230/460	256T	HHI20-36-256T	23.1	91.7	300	
20	1800	208-230/460	256T	HHI20-18-256T	24.8	93.0	300	
	1200	208-230/460	286T	HHI20-12-286T	26.7	91.7	410	

When using any motor with a variable frequency drive, take precautions to eliminate or reduce shaft currents in order to prolong bearing life.

Dimensions On Page 100

Continued On Next Page



HYUNDAI CROWN TRITON™ SERIES MOTORS

PREMIUM EFFICIENCY



TEFC Enclosure ▪ Rigid Base

Three-Phase ▪ 208-230/460 and 460 Volt

HP	RPM	Voltage	Frame	Model Number	FL Amps (A)	FL Eff. (%)	Approx. Wt. (lbs.)	Notes
25	3600	208-230/460	284T	HHI25-36-284T	28.5	91.7	380	
	3600	208-230/460	284TS	HHI25-36-284TS	28.5	91.7	380	
	1800	208-230/460	284T	HHI25-18-284T	30.3	93.6	380	
	1200	208-230/460	324T	HHI25-12-324T	31.2	93.0	550	
30	3600	208-230/460	286T	HHI30-36-286T	33.8	91.7	410	
	3600	208-230/460	286TS	HHI30-36-286TS	33.8	91.7	410	
	1800	208-230/460	286T	HHI30-18-286T	36.0	93.6	410	
	1200	208-230/460	326T	HHI30-12-326T	37.1	93.0	560	
40	3600	208-230/460	324T	HHI40-36-324T	45.5	92.4	530	
	3600	208-230/460	324TS	HHI40-36-324TS	45.5	92.4	530	
	1800	208-230/460	324T	HHI40-18-324T	48.8	94.1	550	
	1200	208-230/460	364T	HHI40-12-364T	48.8	94.1	780	
50	3600	208-230/460	326T	HHI50-36-326T	55.8	93.0	540	
	3600	208-230/460	326TS	HHI50-36-326TS	55.8	93.0	540	
	1800	208-230/460	326T	HHI50-18-326T	59.9	94.5	560	
	1200	208-230/460	365T	HHI50-12-365T	60.2	94.1	840	
60	3600	208-230/460	364T	HHI60-36-364T	65.6	94.1	780	
	3600	208-230/460	364TS	HHI60-36-364TS	65.6	94.1	780	
	1800	208-230/460	364T	HHI60-18-364T	69.9	95.0	780	
	1200	208-230/460	404T	HHI60-12-404T	71.2	94.5	1120	R
75	3600	208-230/460	365T	HHI75-36-365T	79.8	94.5	820	
	3600	208-230/460	365TS	HHI75-36-365TS	79.8	94.5	820	
	1800	208-230/460	365T	HHI75-18-365T	85.1	95.4	820	
	1200	208-230/460	405T	HHI75-12-405T	87.0	94.5	1220	R
100	3600	208-230/460	405TS	HHI100-36-405TS	110.1	94.5	1110	
	1800	208-230/460	405T	HHI100-18-405T	114.1	95.4	1110	R
	1800	208-230/460	405T	HHI100-18-405TBB	114.1	95.4	1110	
	1200	208-230/460	444T	HHI100-12-444T	116.6	95.0	1530	R
125	3600	208-230/460	444TS	HHI125-36-444TS	139.5	95.0	1610	
	1800	208-230/460	444T	HHI125-18-444T	142.0	95.4	1530	R
	1800	208-230/460	444T	HHI125-18-444TBB	142.0	95.4	1530	
	1200	208-230/460	445T	HHI125-12-445T	147.7	95.0	1700	R
150	3600	460	445TS	HHI150-36-445TS	161.5	95.0	1770	
	1800	460	445T	HHI150-18-445T	163.8	95.8	1700	R
	1800	460	445T	HHI150-18-445TBB	163.8	95.8	1700	
	1200	460	447T	HHI150-12-447T	169.5	95.8	1860	R
200	3600	460	447TS	HHI200-36-447TS	219.3	95.4	1900	
	1800	460	447T	HHI200-18-447T	222.4	96.2	1860	R
	1800	460	447T	HHI200-18-447TBB	222.4	96.2	1860	
	1200	460	449T	HHI200-12-449T	231.2	95.8	2430	R
250	3600	460	449TS	HHI250-36-449TS	276.6	95.8	2430	
	1800	460	449T	HHI250-18-449T	281.7	96.2	2430	R
	1800	460	449T	HHI250-18-449TBB	281.7	96.2	2430	

When using any motor with a variable frequency drive, take precautions to eliminate or reduce shaft currents in order to prolong bearing life.

R Roller bearing on drive end for belted applications

